



The Build Empathy Workshop

General information
for students in Years 4-6




Develop Your Students' Empathy With The 'Build Empathy' Workshop

“Empathy is seeing with the eyes of another, listening with the ears of another and feeling with the heart of another.” – Alfred Adler

With the Build Empathy Workshop, your students will be on their way to greater wellbeing, and happier and healthier lives through the building of empathy.

In this 3-session interactive workshop, your students will learn to:

- 01** Recognise different viewpoints and perspectives.
 - 02** Identify and acknowledge your own biases.
 - 03** Identify emotions yourself and other people.
 - 04** Connect your emotions to another person's emotions.
 - 05** Explain the 3 key reasons why empathy is important.
 - 06** Discuss how to show empathy.
- 



Build Empathy Workshop

Learning Objectives

The Build Empathy Workshop is interactive and gives your students the opportunity to further develop their empathy with strategies backed by research.

Session 1

- > To consider different viewpoints.
- > To value diverse perspectives.
- > To recognise your own biases.



Session 2

- > To recognise emotions in other people.
- > To recognise emotions in yourselves.

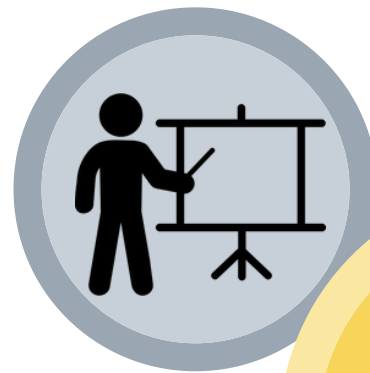


Session 3

- > To explore why empathy is important.
- > To know how to show empathy to others.

The Workshop Experience

In this three-session workshop, your students will enjoy a balanced blend of expert teaching and engaging activities. All sessions are created and facilitated by teachers.

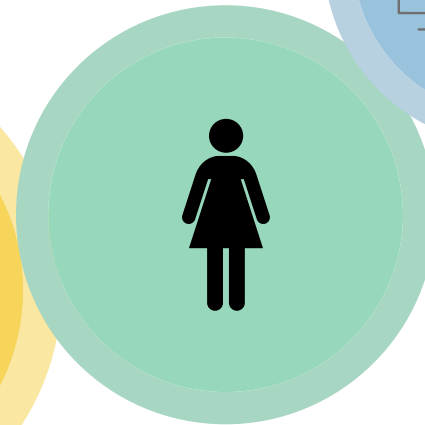
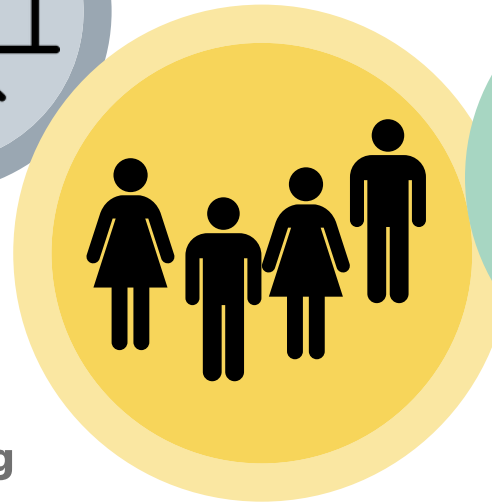


Teaching

Led by your expert teacher and facilitator

Group Activities

Small group and large group activities to keep the students engaged while they learn

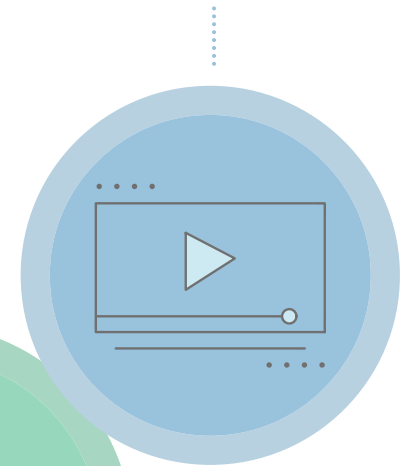


Individual Activities

Students self reflect as they progress through the workshop

Modalities

Delivered through video, interactive activities and remotely



TEACHER FRIENDLY

Curriculum Connections

The Empathy Initiative is a time-saver for teachers as all workshops are Australian and Victorian Curricula-aligned including the general capabilities: Critical Thinking, Personal & Social, Ethical and Cultural.

Workshops can be adapted to meet particular class and/or curriculum requirements.

Enquiries:

jeremy@jeremykalbstein.com.au

Australian
Curriculum

Victorian
Curriculum

ACPPS037
ACPPS038
ACPPS056
ACELY1796
ACELY1816
ACELA1502

VCHPEP092
VCHPEP110
VCELY337
VCELY366

WHAT'S INCLUDED

Workshop Details

Your students will enjoy world-class instruction through the workshop, with engaging and meaningful activities that the students will want to continue with long after the session has concluded. To maximise interaction, sessions are limited to 100 students.

PRICING

Over a term

\$900

BOOK NOW

In one day

\$750

BOOK NOW

Combined with
other workshop(s)

CONTACT US



For more information, contact:

jeremy@jeremykalbstein.com.au

0435 743 403

www.jeremykalbstein.com.au